

# COSHH CABINETS



CoSHH cabinets are designed for the secure storage of hazardous substances. The dark grey paint finish is highly visible & indicative of chemicals being stored.

## GENERAL INFO & FEATURES

- Compliant with CoSHH Regulations
- 1.2mm fully welded integral sump
- Spill retaining adjustable galvanised shelves
- Secure 2 - point locking systems - Supplied with 2 keys
- 70kg UDL shelf capacity

## PAINT FINISHES

- Three stage pre-treatment and phosphate coating,
- Carcass & doors powder coated with one coat epoxy polyester full gloss powder
- Includes Germ Guard Anti-Bacterial Compound



Optional stands available



2-Point locking system

**DGY**  
Dark Grey - RAL 7024

## CLASSIFICATIONS

- Fire Classification EN 13501-1
- ISO 9001:2015

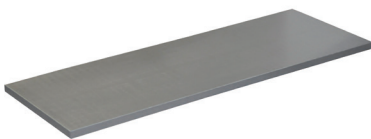
## CONSTRUCTION

- 0.7mm mild steel part-weld part-riveted body
- 0.9mm mild steel stiffened cabinet doors

## LABEL



## EXTRA SHELVES



- Available for all floor cabinet sizes
- Galvanised spill retaining shelves
- Manufactured from mild steel
- Fire Classification EN 13501-1 & ISO 9001:2015



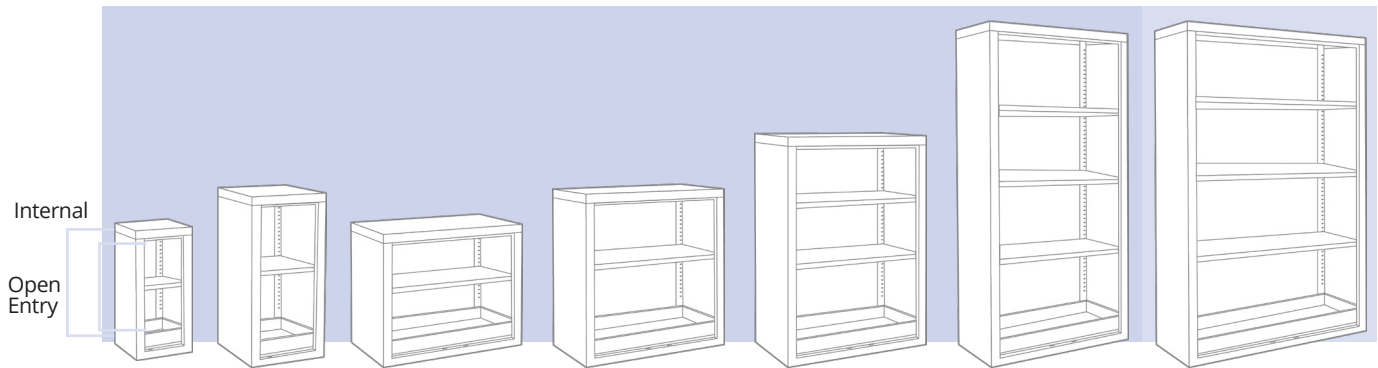
# COSHH CABINETS

## EXTERNAL DIMENSIONS



<b>Width</b>	350mm	460mm	900mm	900mm	900mm	900mm	1200mm
<b>Depth</b>	300mm	460mm					
<b>SKU</b>	34021205	34021203	34021206	34021204	34021202	34021200	34021201
<b>Sump Capacity</b>	3L	7L	14L	14L	14L	14L	18L
<b>Weight</b>	12kg	20kg	22kg	29kg	34kg	48kg	58kg
<b>Shelves</b>	1	1	1	1	2	3	3

## INTERNAL DIMENSIONS



<b>Internal Height</b>	698mm	898mm	698mm	898mm	1198mm	1798mm	1198mm
<b>Internal Width</b>	346mm	446mm	896mm	896mm	896mm	896mm	1196mm
<b>Internal Depth</b>	285mm	435mm	435mm	435mm	435mm	435mm	435mm
<b>Open Entry H x W</b>	500 x 225mm	700 x 325mm	500 x 775mm	700 x 775mm	1000 x 775mm	1600 x 775mm	1600 x 775mm
<b>Shelves</b>	1	1	1	1	2	3	3

# COSHH CABINETS

## EXTENDED RANGE & ACCESSORIES



### WALL CABINETS

- No sump fitted, pre drilled for wall fixing

H x W x D mm
570 x 850 x 255



### MOBILE CABINETS

- Ideal for transporting hazardous substances

H x W x D mm
840 x 900 x 460
1040 x 900 x 460



### CABINET STANDS

- With adjustable foot for uneven floors

H x W x D mm
500 x 350 x 300
500 x 460 x 460
500 x 900 x 460

## MAINTENANCE

- Clean cabinet paint work periodically with warm soapy water
- Oil hinges and lock sparingly as required with light oil (3in1 or similar)

## SPARES

- Replacement locks available from Workplace
- Spare keys from Fast Key Service LTD  
[www.fastkeys.co.uk](http://www.fastkeys.co.uk)

